



# Evolución Magnética de Fácúlas Observadas con IMaX



Julián Blanco, Judit Palacios, Iballa Cabello, Vicente Domingo, SUNRISE Team

## SUNRISE

Globo estratosférico a  $\approx 36$  km altura

Mejor resolución, posibilidad observación UV

Lanzado en verano ártico en órbita superior a círculo polar  
--> observaciones continuas sin ciclo día/noche

Telescopio de diámetro 1 m

Instrumentos: SUFI (imágenes en UV); IMaX (espectropolarímetro)

## IMaX

Basado en:

Etalón de LiNbo

Línea de observación: FeI 5250 Å

Modos de observación: 3-5-12 posiciones

LCVR

Stokes completo o I, V

Diversidad de fase

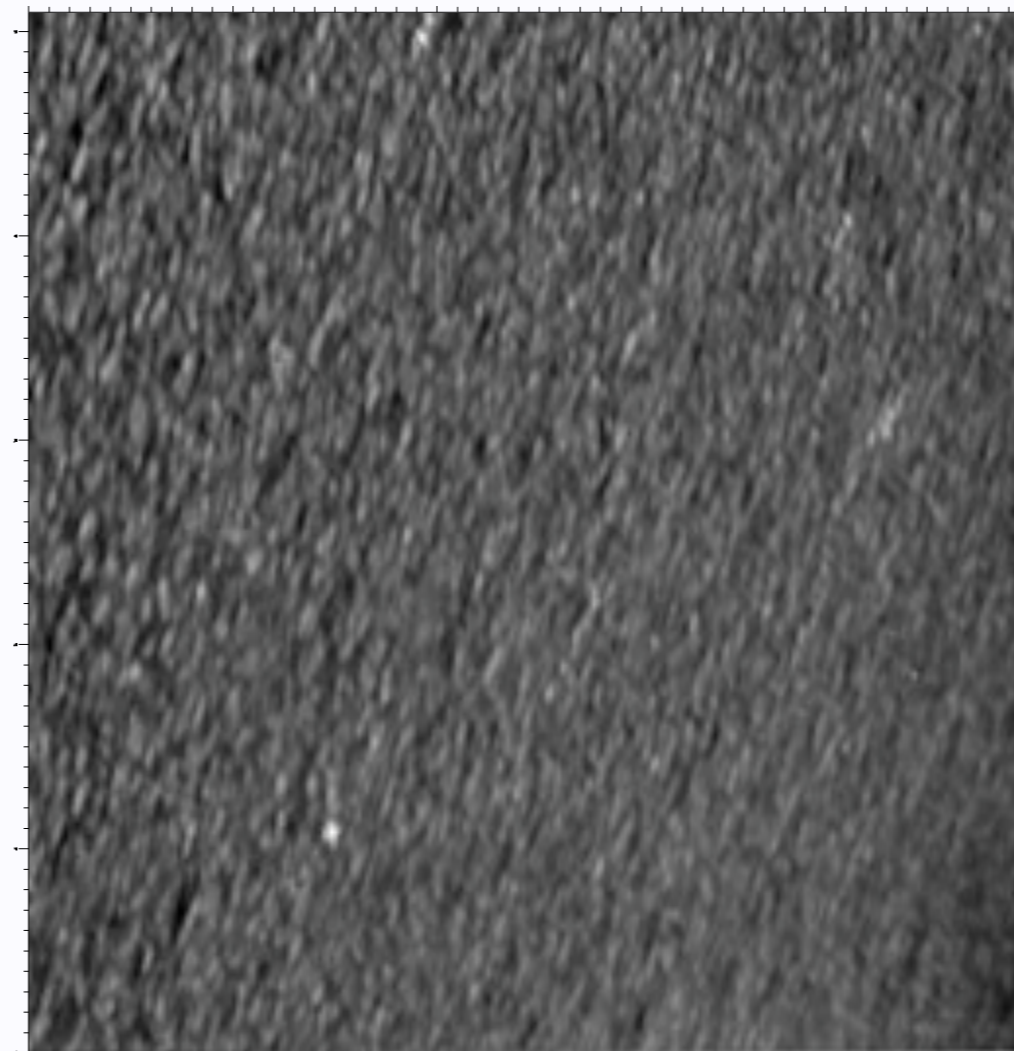
Dual-beam

Cadencia: 33 s (modo V5-6)

8 s (modo L3-2)

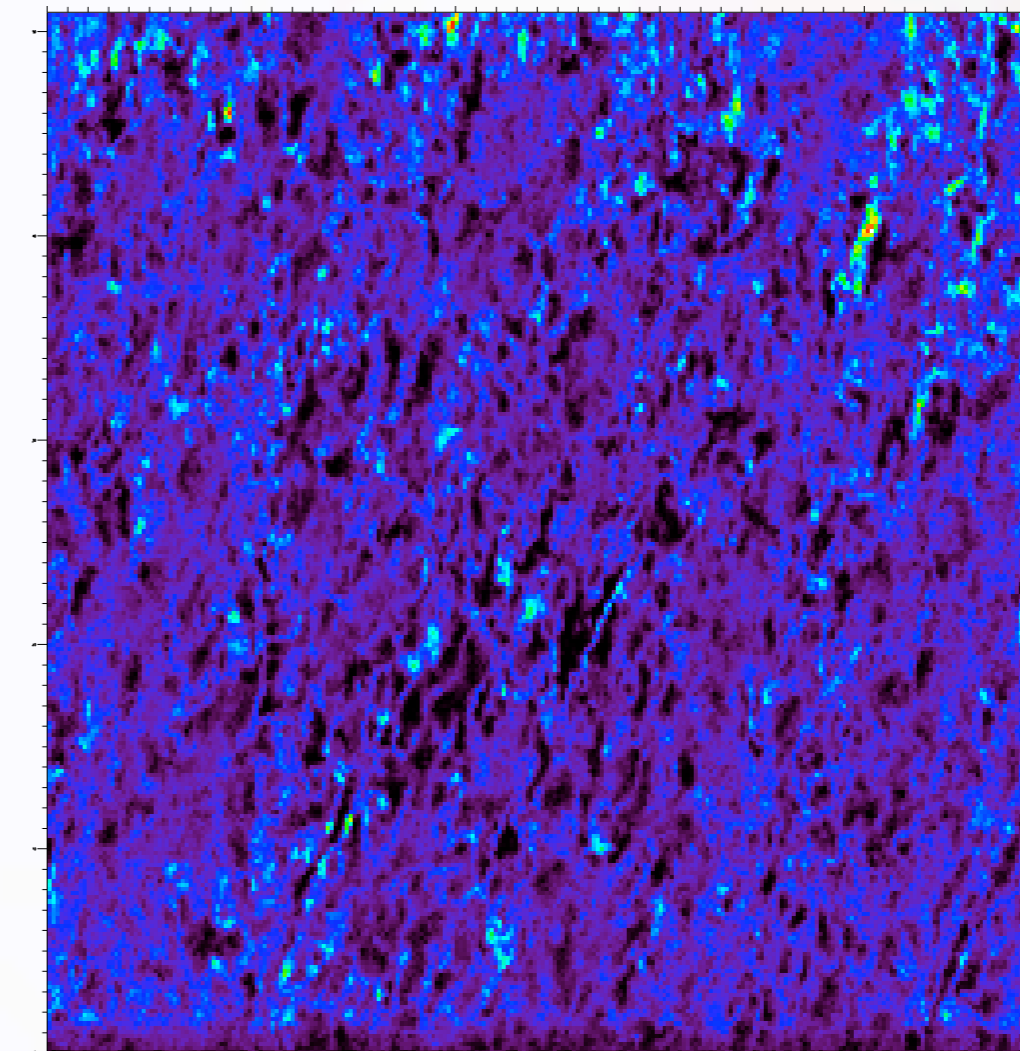
## Serie en el limbo, de $\approx 21$ min.

Continuo

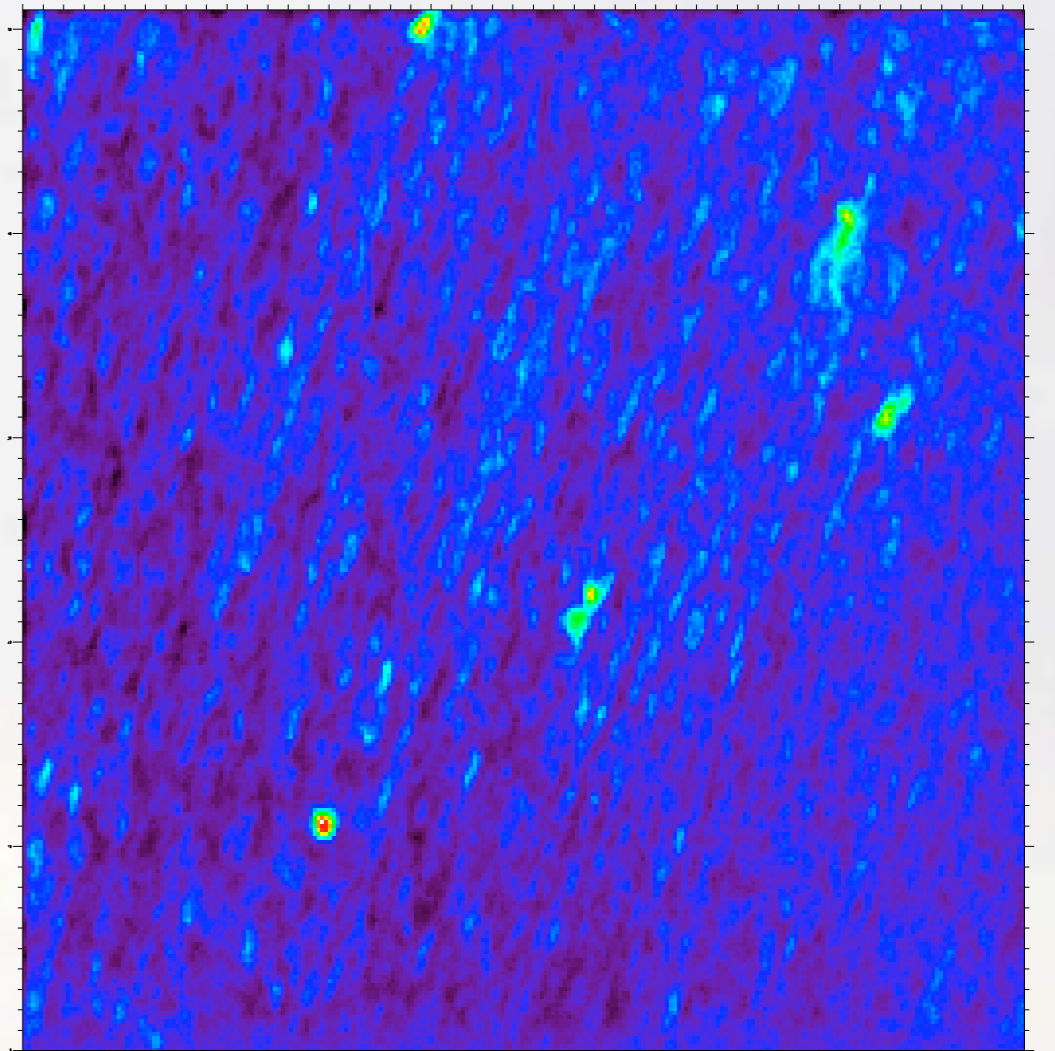


Magnetograma de cancelación

$$\langle |\Phi| \rangle - |\langle \Phi \rangle|$$

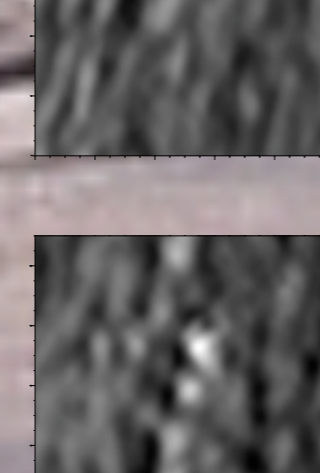
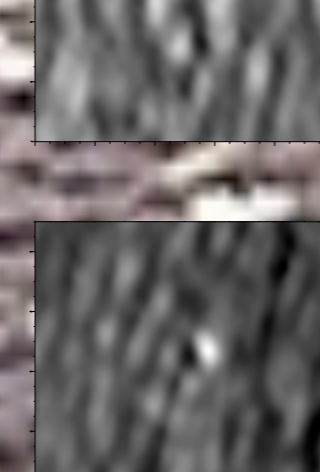
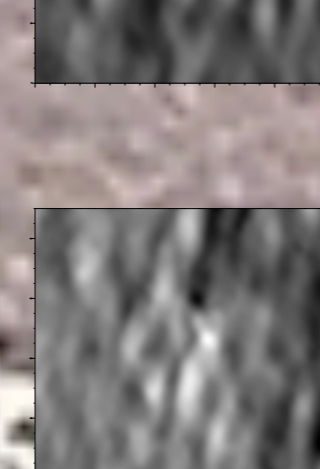
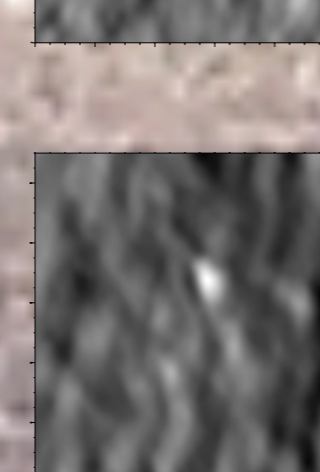
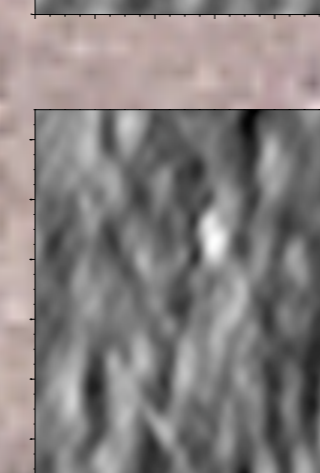
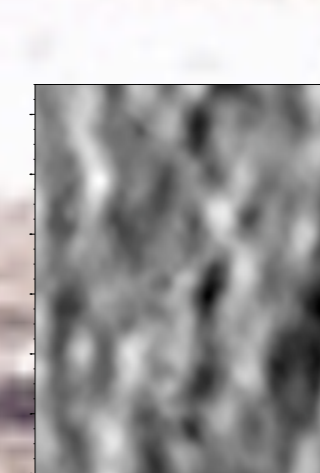
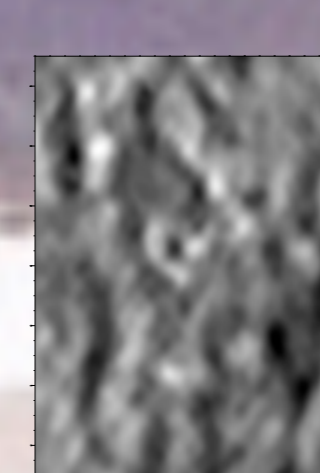
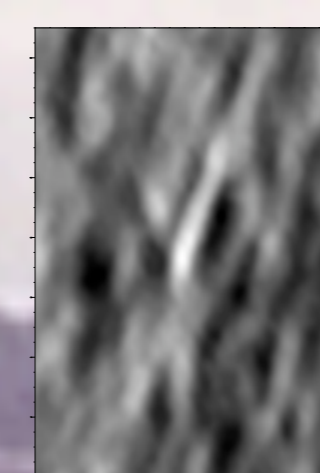
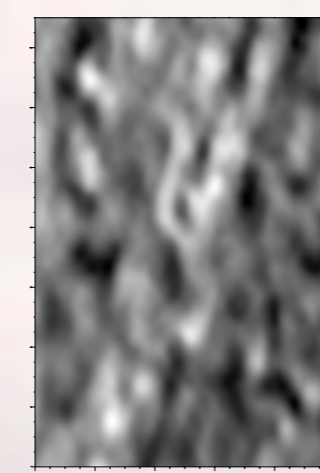
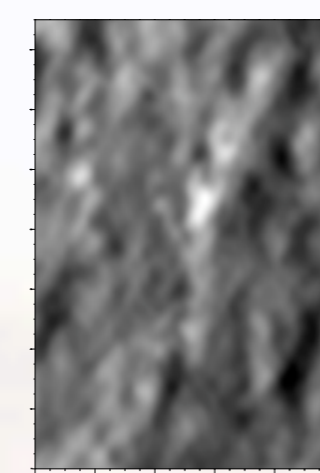


Promedio temporal  $B_{trans}$

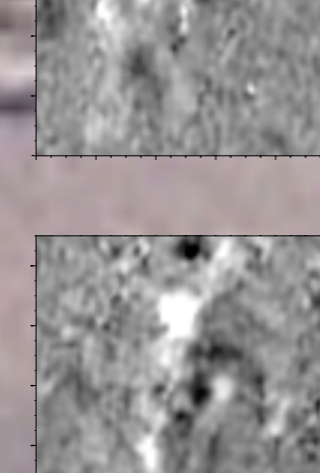
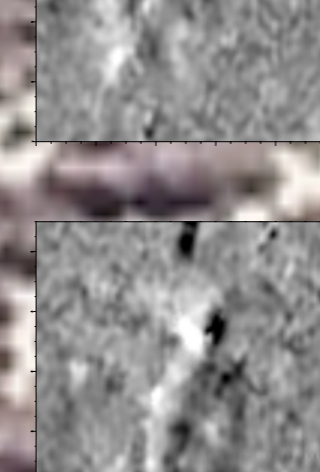
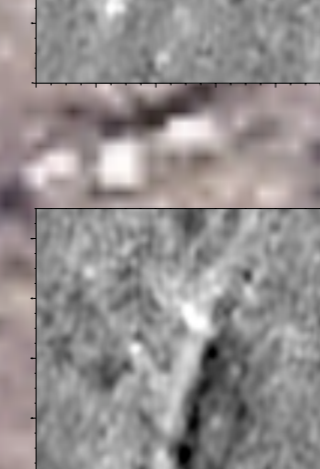
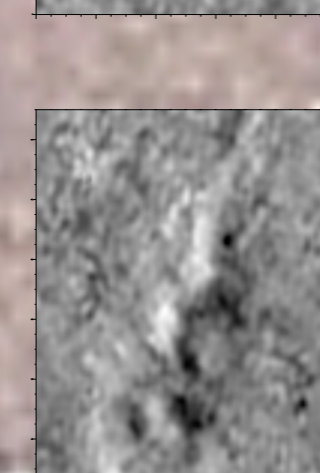
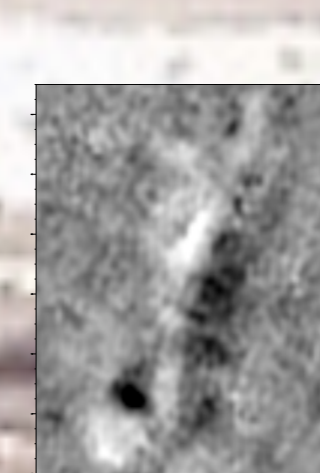
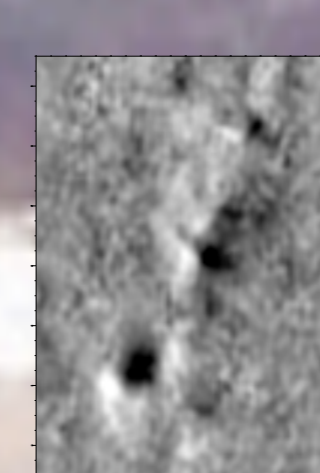
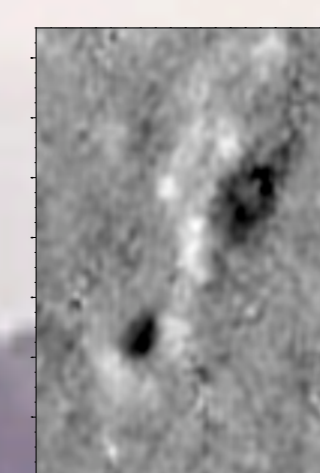
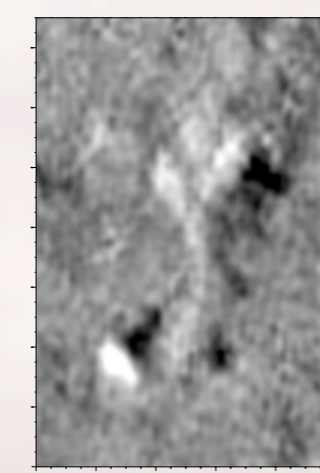
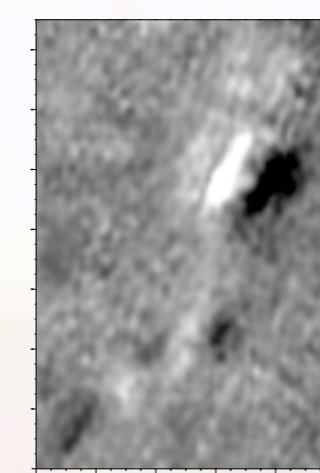


## Desglose temporal

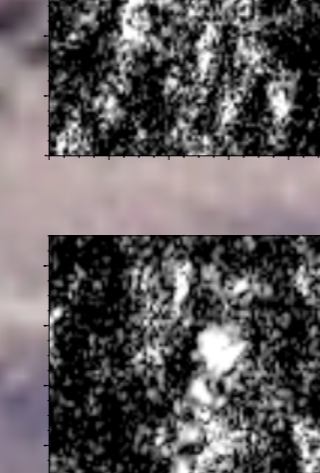
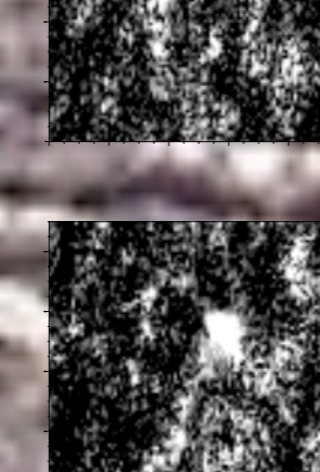
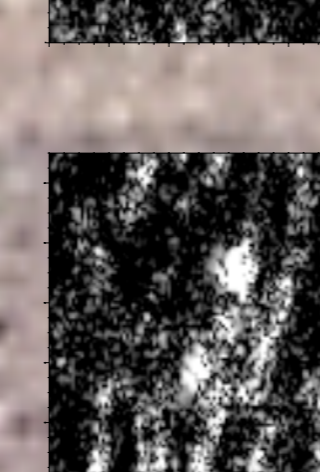
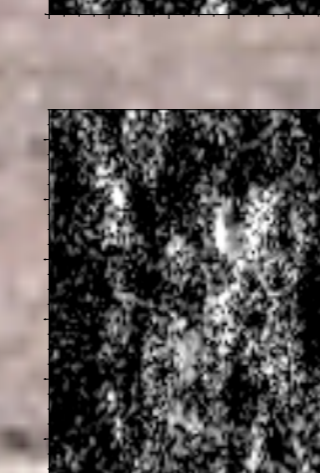
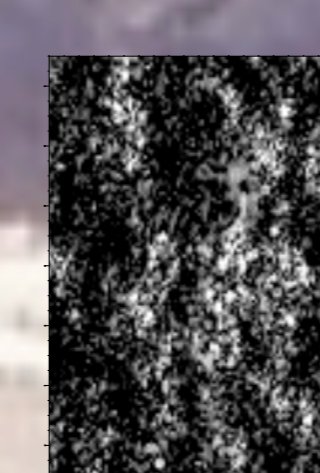
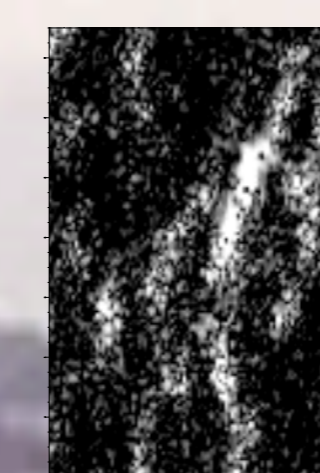
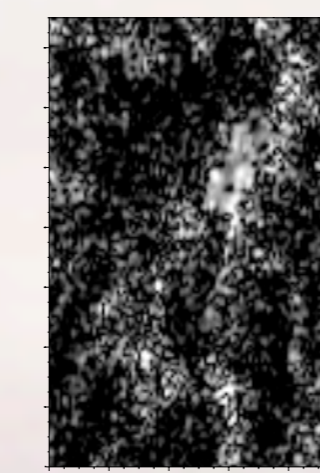
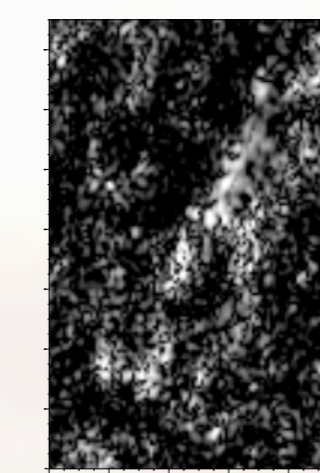
Continuo



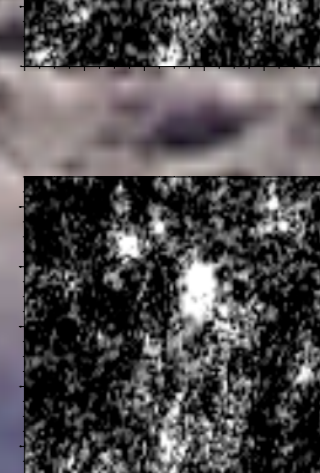
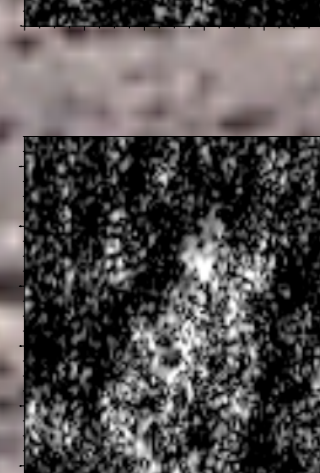
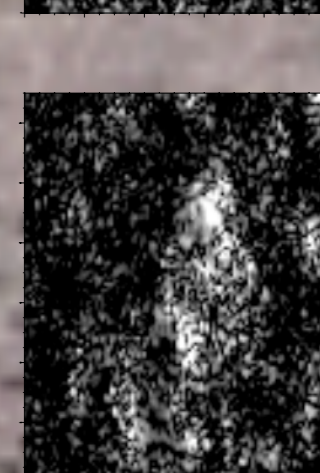
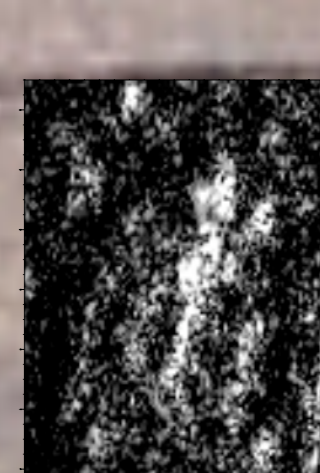
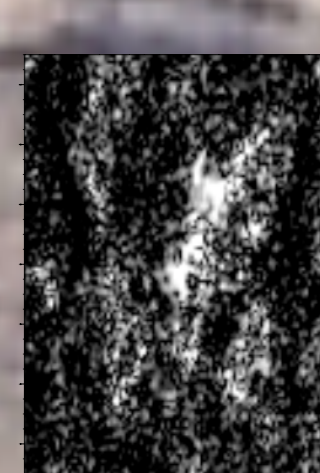
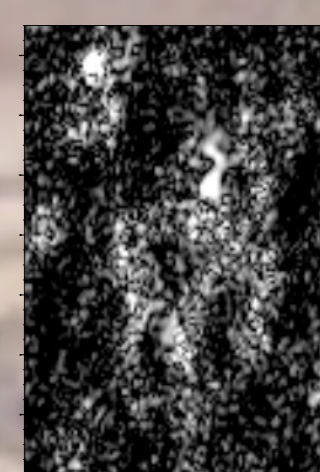
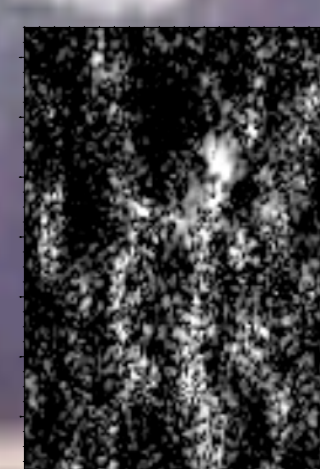
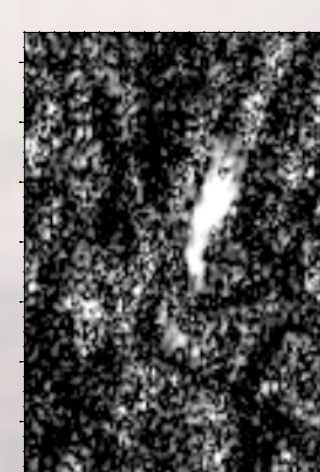
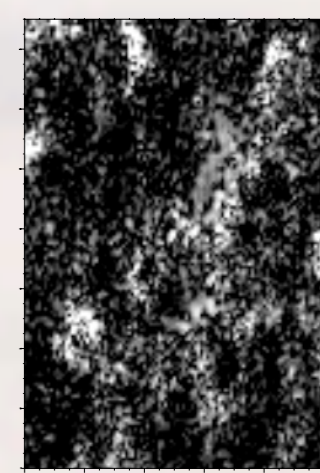
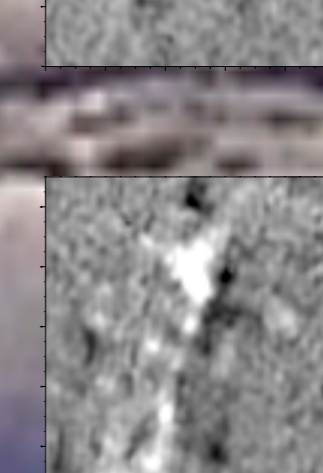
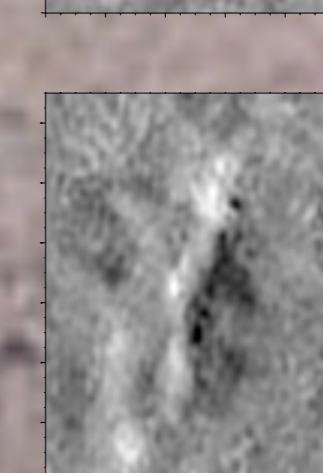
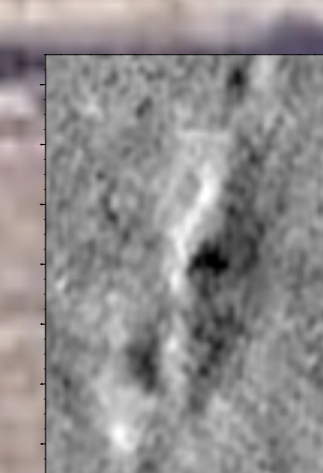
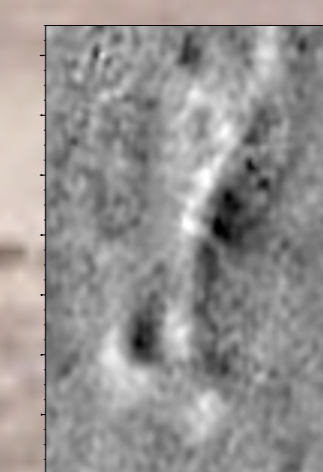
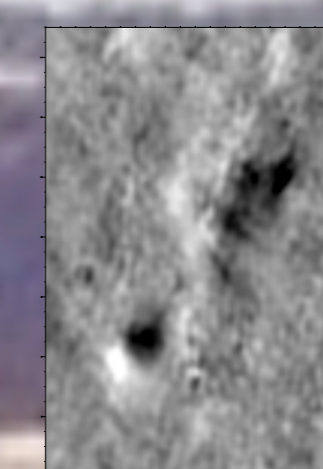
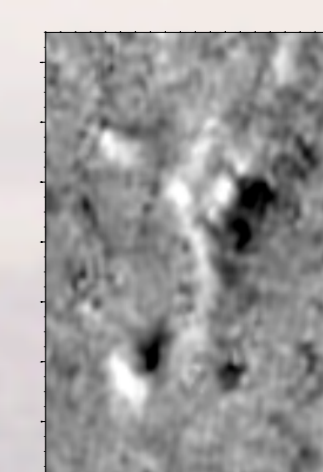
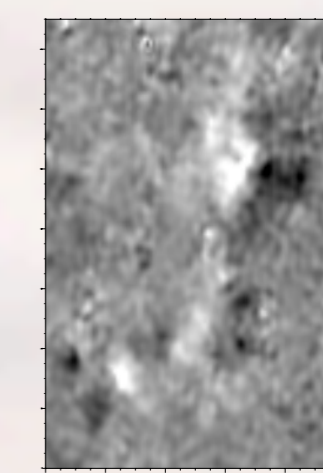
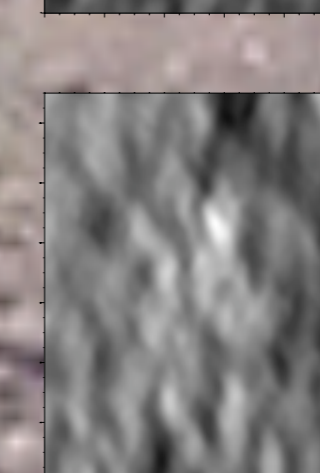
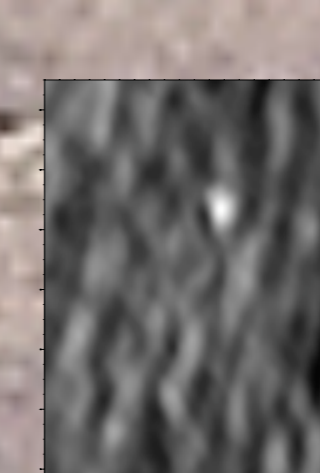
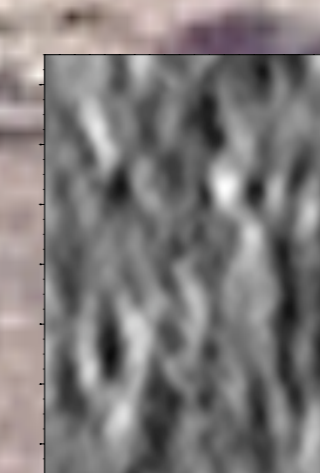
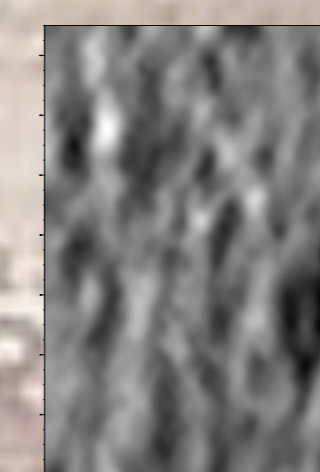
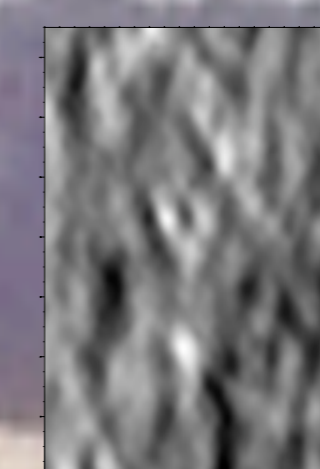
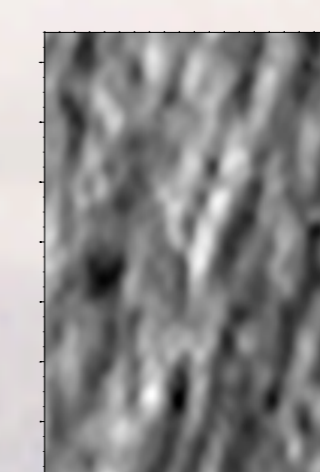
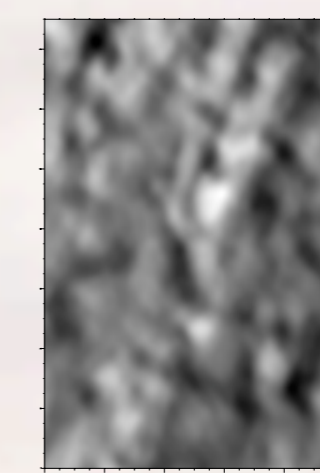
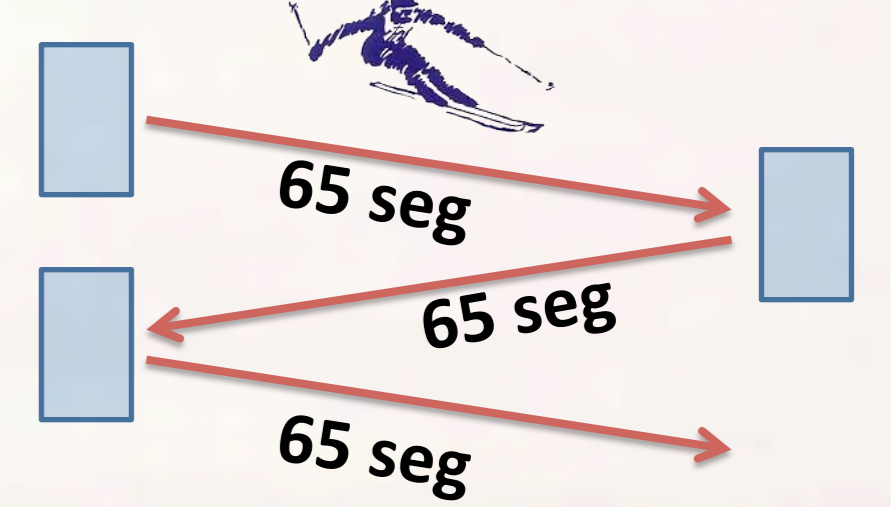
$B_{lon}$



$B_{trans}$



Orden temporal de los frames:



Serie temporal (limitada a una imagen cada 65 seg, en zig-zag, por simplificar la visualización) del continuo, y de campo longitudinal y transversal obtenidos a través de aproximación weak-field. Las imágenes de campos están saturadas para facilitar la visualización.

